

HAVEN RISING: BECOMING MORE

OCTOBER 8TH, 2020 | 7:00 PM

Thank you for joining us for Haven Rising: Becoming More. Tonight, you will hear from Sarabeth Rees, Haven's Capital Campaign Chair, Michelle Skinner, Haven's Board President, Governor Steve Bullock, a survivor of domestic violence, and dedicated community members and supporters of Haven.

Be a part of history as Haven launches their capital campaign for a new shelter. You will hear from Haven's Executive Director, Erica Aytes Coyle and MASS Design Group about the design process and progress for the new shelter that has been in the works for years.

Enjoy a sneak peek of the actual renderings and have the opportunity to participate in this project.

TONIGHT'S FEATURED COCKTAILS PRESENTED BY PLONK

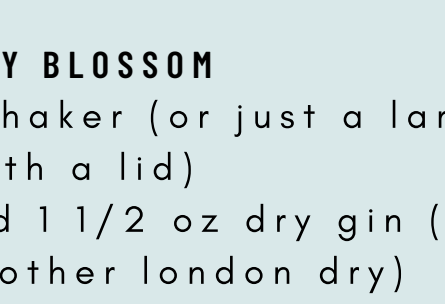
Are you enjoying a drink with us tonight? If so, take a photo and tag us in your Instagram story!

@havenmt

HUCKLEBERRY MOSCOW MULE

In a regular 10 oz "rocks" glass:

- add 1 1/2 oz huckleberry vodka
- squeeze of 2 limes wedges (I like to drop them into the glass after squeezing them)
- about 4 oz of your favorite ginger beer (we enjoy cock-n-bull)
- optional: shave a small amount of fresh ginger root into the glass
- top with ice and garnish with a lime wheel



BIG SKY BLOSSOM

In a shaker (or just a large glass jar with a lid)

- add 1 1/2 oz dry gin (beefeater or other london dry)
- add 1 oz of st. germain elderflower liqueur
- add 1/2 oz of lemon juice-shake with ice and strain into a martini or rocks glass
- garnish with a lemon peel



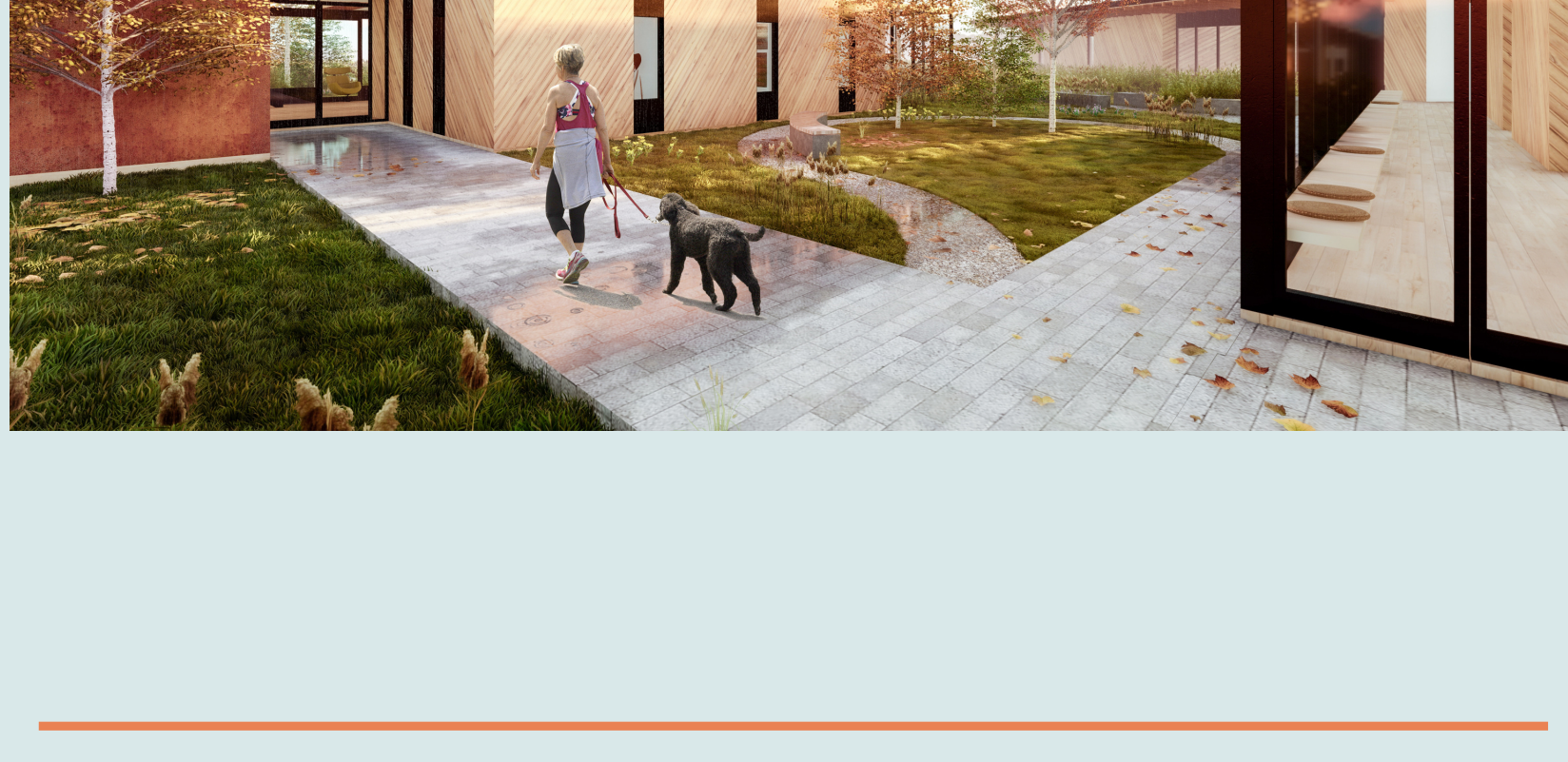
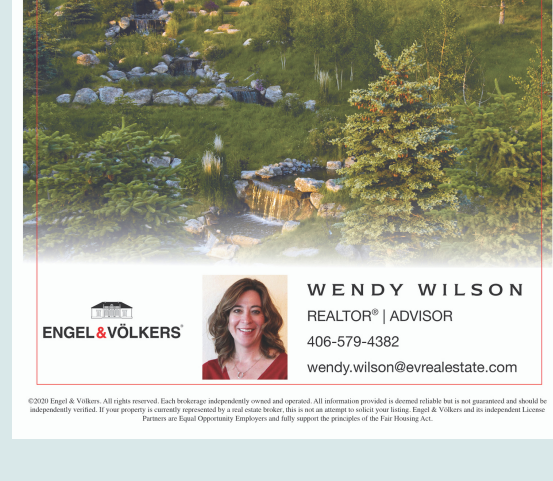
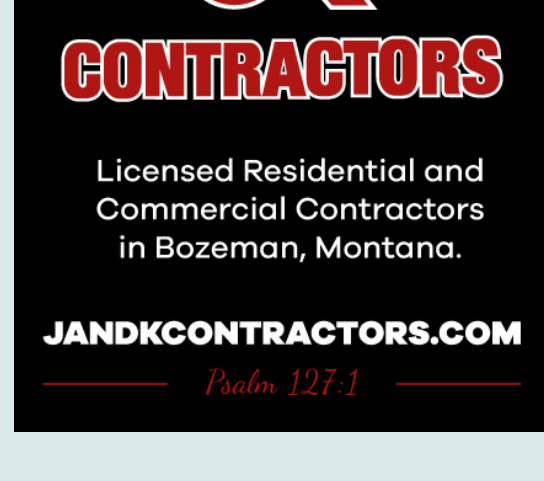
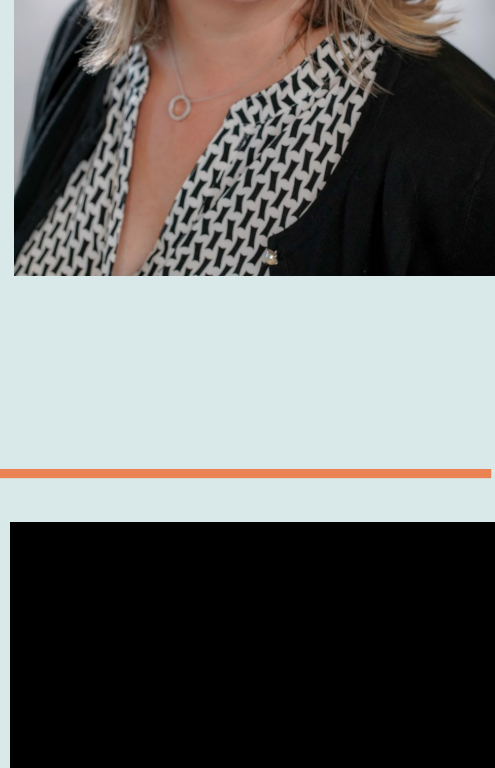
ABOUT THE SPEAKERS



Sarabeth Rees is president of Watson Rees, a strategy and management consulting firm. She is also the Founder and CEO of Pod People: Remote Learning Support. An accomplished business strategist, Sarabeth works with senior management teams to navigate complex, high-stakes challenges. Prior to her work with Watson Rees and Pod People, Sarabeth was a partner with The Hyalite Group, the Chief Operating officer of Orb Media, and a strategy consultant with Booz Allen Hamilton and BearingPoint (now PwC). Sarabeth is honored to have served as the Chair of the Board of Haven from 2018-2020 and currently serves as Chair of Haven's Capital Campaign. She is serving as Haven's Interim Executive Director during the Fall of 2020 while the Executive Director is on Maternity leave.

Sarabeth sits on the board of the Joyful Heart Foundation, served on the board of Haven for six years, co-founded the Board Chair Circle, co-founded and co-chaired the Gallatin Valley Anti-Human Trafficking Task Force, and has served as a board member on the boards of the Montana Ballet Company, Bozeman Public Library Foundation and the editorial board of the Bozeman Daily Chronicle. She is also a member of the faculty at Montana State University.

Michelle Skinner (she/her/hers) is the Director of Health Systems for TeleTracking. As a nurse with more than 20 years in healthcare leadership, Michelle believes the rising need for the services Haven provides is an indicator of the need for safety, healing, education, and awareness in our community. She is honored to serve as the Haven Board President in order to assist in advancing the mission of the organization in collaboration with Haven's amazing team. Michelle lives on a small farm in Gallatin Gateway with her partner, John Hill, and their two Griffons, Cookie and Lou, where they enjoy exploring and spending time outdoors.



THANK YOU TO OUR EVENT SPONSORS

PRESENTING



ADVOCATE



SUPPORTER



Angie and Levi Kujala OWEN LEGACY GROUP A PARTNER OF A COMMUNITY A CARE Kathy Malone

EMPOWERMENT



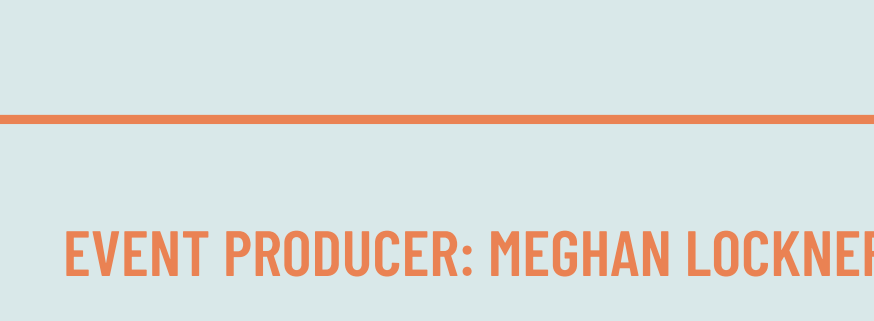
FRIEND



THANK YOU TO OUR YEAR-ROUND SPONSORS



THANK YOU TO OUR SHELTER PARTNERS



EVENT PRODUCER: MEGHAN LOCKNER